

# e. Blenders

High Professional Commercial Blenders

e. everywhere · every time · every days



## Versatility —

- Fresh Fruits Juice / Ice Slush
- Fresh Vegetables Juice / Ice Slush
- Hi - Fiber Fruits & Vegetables Juice / Ice Slush
- Energetic Soup . grass
- Garlic Mud . Pepper Power
- Taro Mud . Nut Powder
- Vegetable thick Soup
- Animal Soft Bone....etc

e

Natural  
Fresh  
Organic

Business . Household . Commercial Uses

### Catering Depot Inc

Unit 3, 11/F, Block A  
Veristrong Industrial Plaza  
34 -36 Au Pui Wan Street

Fotan, New Territories, Hong Kong

Tel: +852 2690 3569 Fax: +852 2690 5259

Email: [info@cateringdepot.com](mailto:info@cateringdepot.com)

Website: [www.cateringdepot.com](http://www.cateringdepot.com)

[www.cateringdepot.com](http://www.cateringdepot.com)



Your Global Resource Center

Professionally Commercial Ice Slush Blender  
Organic & Hi - Fibre

e. Health saying: physical body and mentality need nature, freshness and organism.

## SPECIFICATION

MODEL	EJ-737	EJ-747	EJ-767
CAPACITY	1500 cc	2000 cc	2500 cc
TYPE	Time \ High low speed \ May the Velocity modulation		
VOLTAGE 110V	110V 50Hz	11.5A	1300W
VOLTAGE 220V	220V 60Hz	6A	1200W
CARTON SIZE	W370 × D320 × H325 mm		
DIMENSIONS	W190 × D210 × H220 mm		
ENDURANCE OF CONTAINER	— 40 °C - 180 °C		
PRTECTORDEVICE			
Current protector	110V...15 A	220V...10 A	
thermal protector for motor	135 °C		

★110V machine is available in 10A plug. ★220V machine is available in 5A plug.

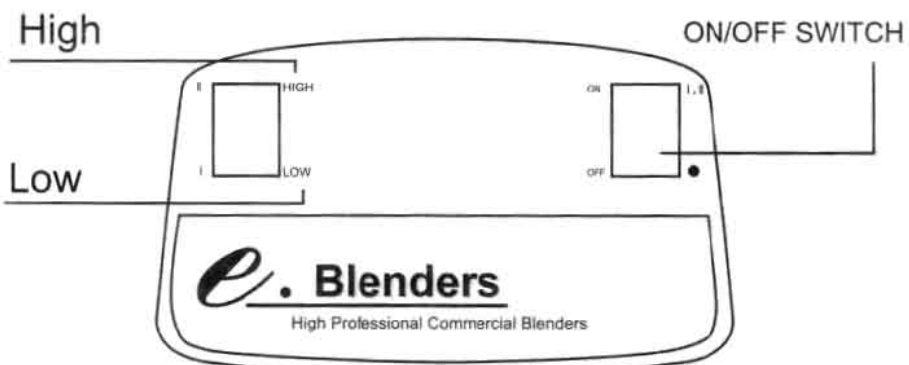
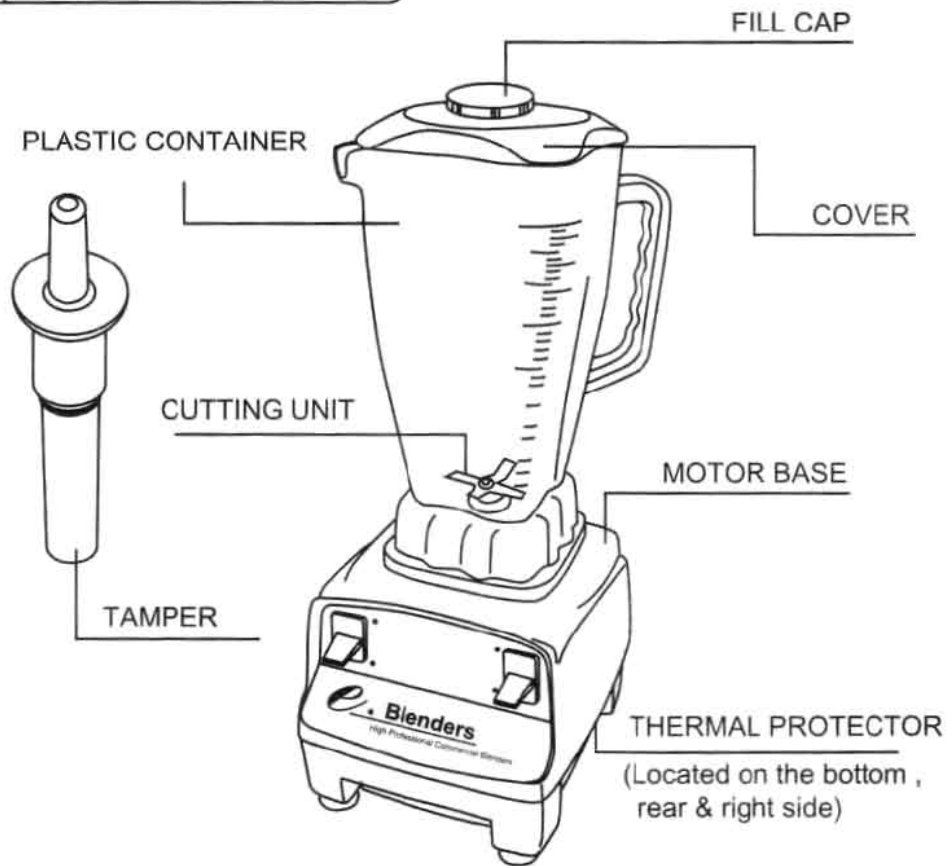
## WARRANTY

The machine is one year warranty, excluding damage caused by natural disaster and personal factors. The blade agitator and the motor brush are also excluded from warranty, for they are consumptive material.

## FEATURE

- ☆ Multi-use  
(enclosed with fruits & vegetables organic operation booklet)
- ☆ Industrial high-speed motor , high efficiency , powerful , one year warranty.
- ☆ Double automatically protective electric circuit  
(thermal/current protector)
- ☆ Stainless steel & hardening blade.
- ☆ CNS & UL approved.

ILLUSTRATION OF BLENDER



e. Health saying: Wealth is the accumulation of money.  
Fortune is the accumulation of health.

### CAUTIONS

1. Ensure the container is exactly on motor base before starting.
2. Please hold the container when it starts, as the motor is quite powerful. In addition, ensure the clutch is in place.
3. No tamper when starting the motor. Put cover on when using tamper.
4. To prevent the danger of the sharp blade, don't get food from the container by hand whether the container is put on the motor base.
5. Before pouring food out of the container, remove it from the motor base first.
6. Note if touching ON/OFF switch carelessly before or after starting.

### SAFEGUARDS

1. Unplug when the blender is not in use.
2. The cover can be open only when the blade agitator stops completely.
3. When cleaning, ensure to unplug first. The main base and the container must be washed separately.
4. Don't put the motor base in the water or the dishwasher.
5. When it's in use, keep the kids away and prevent improper action of children to avoid danger.

### MAINTENANCE TIPS

1. When cleaning & maintenance, unplug & turn main switch off.
2. Clean the body & the cover with sponge & rag, and...
3. Don't clean inside of container by hand unless blade is already removed.
4. Clean the rotary shaft & the motor with dry rag...
5. When not easy to remove dirt, clean with mid-ph detergent and then wipe it by dry cloth.

### CAUTION!!!! (BEFORE OPERATING)

No metal articles, such as knives, forks, spoons...etc. in the container.



## CAUTIONS

e. Health saying: Health is fortune.

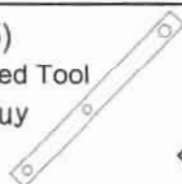
### Attention !

1. Never remove the blade while the container is on the motor base.  
First, take the container away from the motor base.  
Then turn the container upside down.
2. ( Step I showed below ) Use the exact tool to loosen the nut counterclockwise.
3. ( Step II showed below ) To disassemble the blade & the retainer nuts, and replace the blade, use a wrench to disassemble the blade carefully.

## THE REPLACEMENT OF CUTTING UNIT

(EJ-105)

Disassembled Tool  
Choose buy

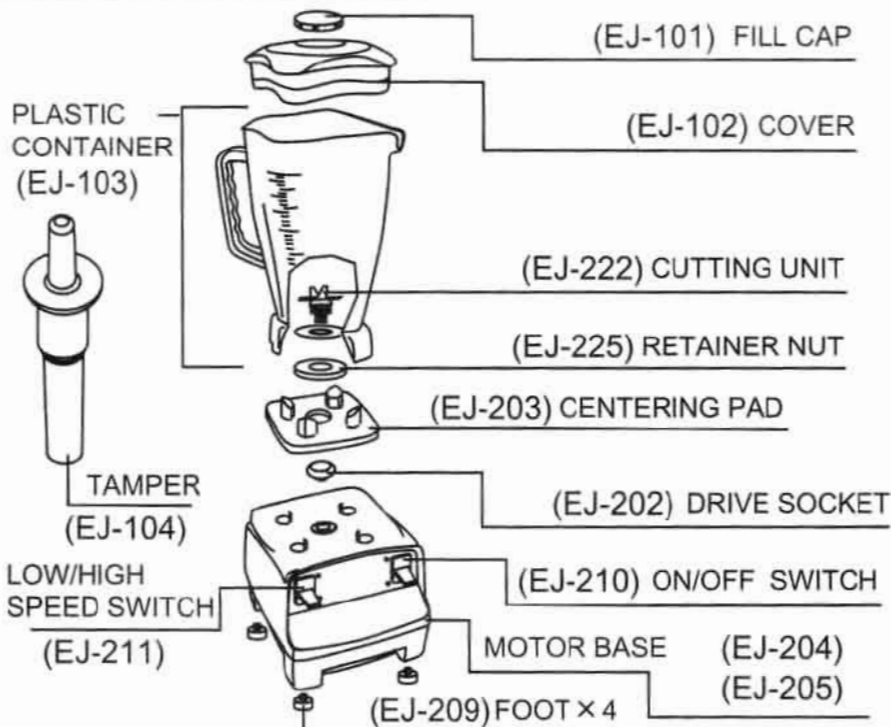


Step I



Step II

## ILLUSTRATION OF BLENDER



*e.* Health saying: Develop sunshine, air, and water  
Nature, freshness, and organism.

## FUNCTIONS

This blender is equipped with an industrial powerful motor whose rotary speed is up to 25,000 rpm. Dry or wet food can be quickly & efficiently into powder or mud, and its original nutrition and flavor are still remained. It's a professional high-speed favorer & a good helper for business and modern family use.

## CLASSIFICATION OF BLADES

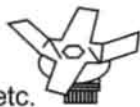
☆ Slush Ice Blade (Dull Style) : Available for ice cube & ice mud.



☆ Fruits & Vegetables Ice Blade (Sharp Style):

Dry materials - Chinese medicine , coffee bean , meat.....etc.

Wet materials - organic beverage , wheat grass , fruit juice....etc.



※To stir soybean , water, and sugar together for over 10 ~ 20minutes could be cooked directly into soybean milk.

☆ Under the state of low speed , it could be regarded as mixer.

## TROUBLESHOOTINGS

Check if the current protector button is turned off. Press it and then reset. If the blender still doesn't work, please check the list in the following.

1. If the power plug is inserted into the power outlet.
2. If fuse or automatic switch shuts off.
3. Power cut or not.

If no problems found above, please call the repair center.  
Don't handle it on your own.



PART NO.	PARTS DESCRIPTION
EJ201	Power Supply Cord 120V
EJ201-2	Power Supply Cord 230V
EJ202	Drive Socket
EJ203	Sound Reducing Centering Pad
EJ204	Housing
EJ205	Bottom
EJ206	Round Plate Bottom
EJ207	Fan Blade
EJ208	Clamp Wire Plate
EJ209	Rubber Foot
	Button Switch Assembly
EJ210	ON/OFF Switch
EJ211	Hi/Lo Switch
EJ212	PC Board Speeding
EJ212-T	PC Board Timer
EJ213	Circuit Breaker
EJ214	Sound Reducing Centering Pad
EJ216	Screw 4 *32 mm
EJ218	Screw 4 *34 mm
EJ219	Motor Rubber Packing
EJ220	Motor Assembly
EJ220-1	Brush Set
EJ222	Agitator Assembly
EJ222-1	Cutter (Flat or Pointed)
EJ222-2	Agitator Shaft
EJ222-3	Agitator Assembly + Retainer Nut
EJ225	Heavy Duty Retainer Nut
EJ227	Gasket
EJ101	Lid Plug
EJ102	Lid for 1500 & 2500 cc
EJ102b	Lid for 2000 cc
EJ103a	1500 cc Container (includes EJ222 + EJ225)
EJ103a-1	1500 cc Container
EJ103b	2000 cc Container (includes EJ222 + EJ225)
EJ103b-1	2000 cc Container
EJ103c	2500 cc Container (includes EJ222 + EJ225)
EJ103c-1	2500 cc Container
EJ104a	Tamper for 2000 & 2500 cc
EJ104b	Tamper for 1500 cc
EJ105	Tool - disassembly heavy duty retainer nut